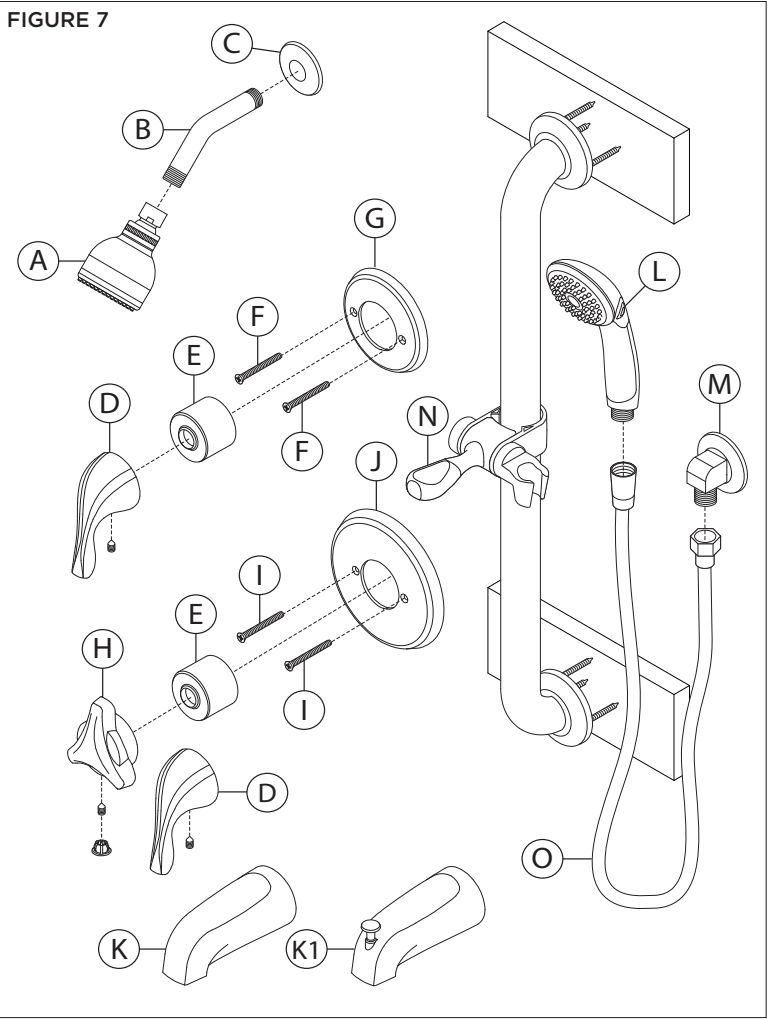


7. Parts Breakdown



*Order in-line vacuum breaker (EF-109) for hand shower systems without dual checks.

Replacement Parts		
Item	Description	Part Number
A	Showerhead	99311030
B	Shower Arm	
C	Flange	99010477
D	'PLR' Handle	99890539
E	Dome Cover	99773757
F	Diverter Escutcheon	
G	Screws	99773758
H	'P' Handle	99124234
I	Shower Escutcheon	Standard (P):
J		Brass (P):
K	Tub Spout	99164211
K1	Diverter Tub Spout	99790554
L	Hand Shower	99773759
M	Wall Elbow	99870893
N	Slide Mechanism	99770402
O	60" Hose	99910690

- Notes:
- 1) Append appropriate suffix for premium finish.
 - 2) Append appropriate flow rate to showerhead or hand shower for low flow.
 - 3) Apply a bead of silicone around the perimeter of all shower trim installed flush to the finished wall. Leave opening on bottom of escutcheons for weep hole.
 - 4) Apply plumber tape to all threaded connections.



Our Goal is Simple — Help Our Customers!

We're Here For You
When You Need Us.

Visit Us Online

www.bestplumbingspecialties.com

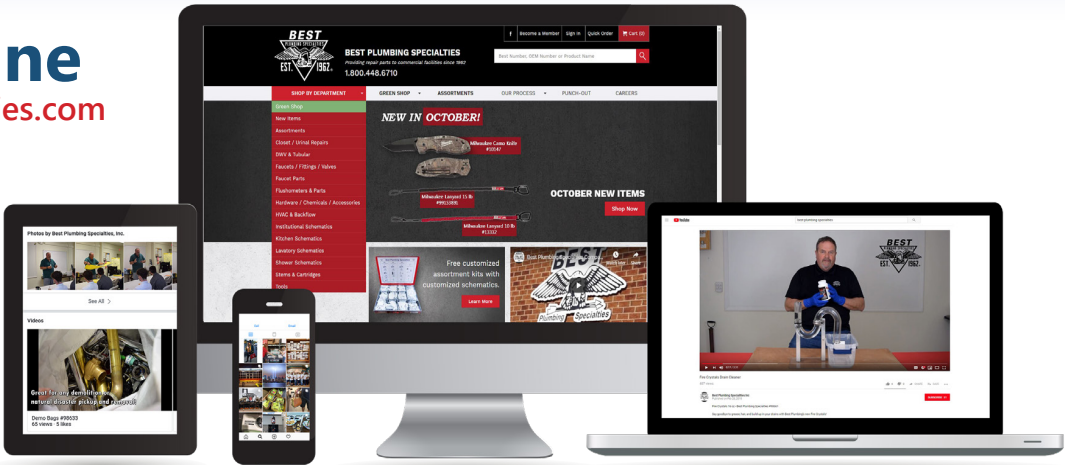
- Browse
- Shop
- Watch New Items Videos
- and more!

Not registered?

Sign up online or email

Marketing at:

marketing@bestplumbingonline.com



To learn more about our **new items every month**, connect with us on social media



Facebook.com/bestplumbingspecialties



youtube.com/user/bestplumbingonline



bestplumbingspecialties

Need help identifying a part, or finding compatible solutions?



Call **1-800-448-6710** or email info@bestplumbingonline.com

(7 a.m. – 6 p.m EST) Monday- Thursday (7 a.m. – 5 p.m. EST) Fridays

Looking to place an order?



Shop Online, Contact Your Rep or Email: orders@bestplumbingonline.com

Subscribe to our email newsletter!

Every month we update you on our new and featured items for the month as well as updates on ongoing and future promotions!

Scan here to sign up for our newsletter



Your Account Rep is

DID YOU
KNOW WE
CARRY?



Scan here for our latest Promotion!

